



MATTHEW ALEXANDER

*Front Cover: Low Tide Botany Bay
(Detail ~ no.11)*

*This page: Sunday by the Sea
(Detail ~ no.14)*



Matthew Alexander

Light & Shadow

6 ~ 31 December
2024

CANTERBURY FINE ART

www.canterburyfineart.com

19 SUN STREET | CANTERBURY | KENT | CT1 2HX

TEL: + 44 (0)1227 634561

Matthew Alexander

Light and Shadow

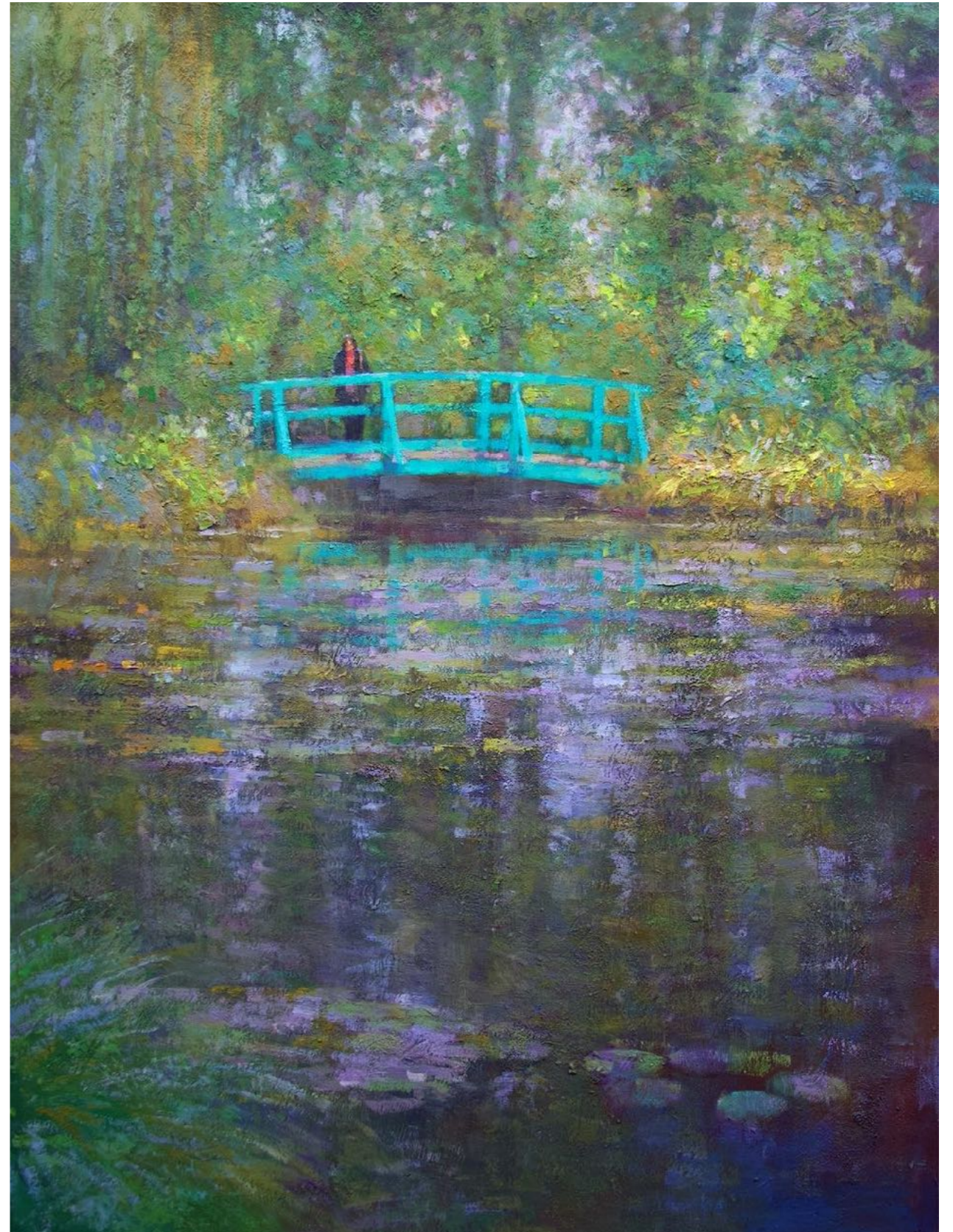
Matthew Alexander's path as a painter began in the heart of Kent, where he was inspired by both the landscape around him and the artistic legacy of his father, Chris Alexander (1926–1982). After his early years studying at art schools in Canterbury and later at Maidstone College of Art and the University of London, Matthew embarked on a career in teaching. However, in 1981, with a family to support, he made the courageous decision to leave his teaching role and dedicate himself fully to painting.

Today, with over forty years of experience, Matthew has become a respected name in the world of British landscape art. His work has captured the attention of art lovers both in the UK and internationally,

Matthew's deep love of the sea is evident in his evocative portrayals of the Kent coastline, the historic sailing barges of East Anglia, and the serene waters of the Norfolk Broads. An avid sailor, he infuses his paintings with a sense of lived experience, capturing the details of traditional vessels and the changing moods of the British shoreline. His scenes are often painted under dynamic skies, which lend a sense of drama and atmosphere.

International locations have also inspired some of Matthew's most memorable works. Venice, with its storied canals and shimmering light, has provided him with endless subject matter. In France, he seeks out scenes along the Seine and around Paris, sometimes even working in places that were favoured by the original French Impressionists. These landscapes evoke a sense of nostalgia, as Matthew's warm colour palette and atmospheric style reflect the timeless beauty of these regions.

Matthew's work is often likened to that of Impressionist masters like Pissarro, Sisley, and Seago, with an emphasis on the interplay of light, mood, and setting. Through his dedication to this style, he bridges the past and present, inviting viewers to connect with the natural beauty and artistry of the British-Impressionist tradition.



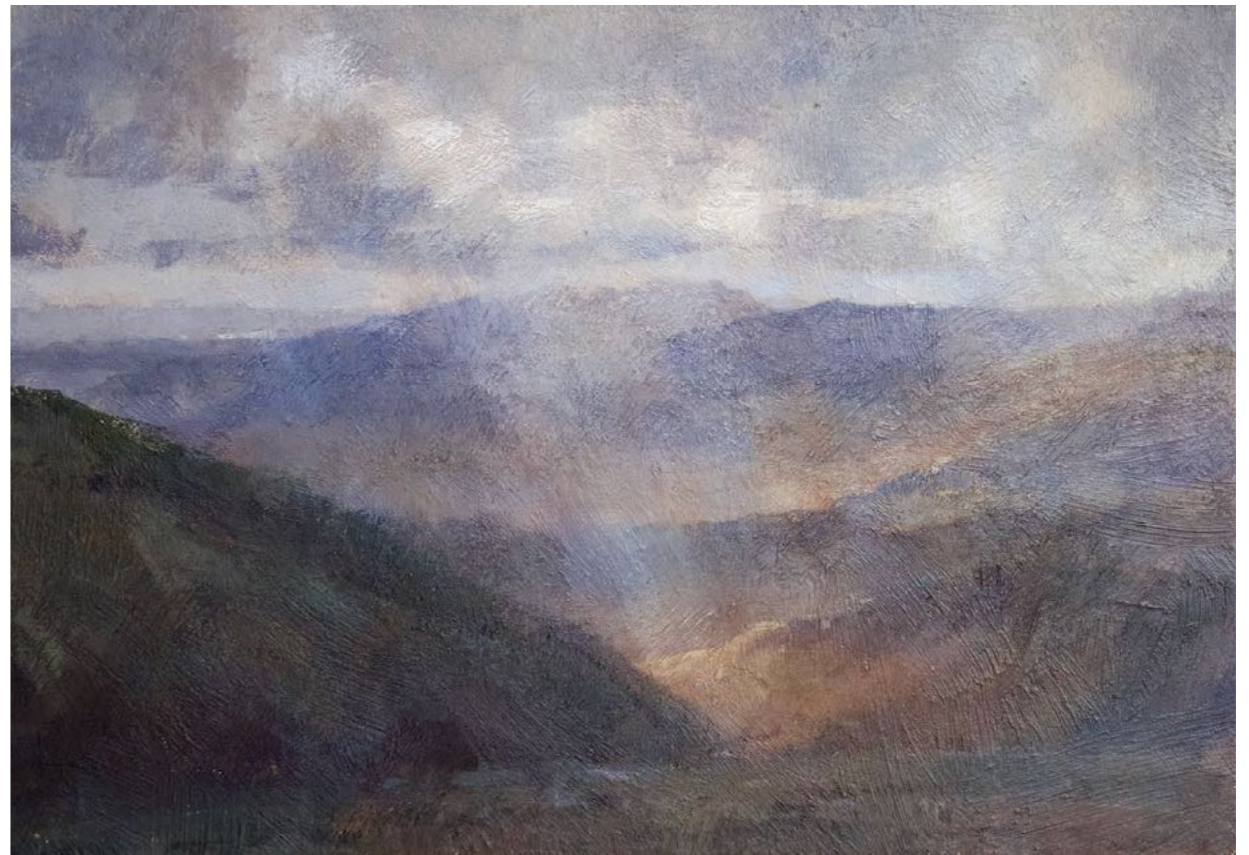
1. **On the Bridge at Giverny**
Oil on board
24 x 18 ins



2. Autumn Colour near Patterdale
Oil on board
8 x 12 ins



3. **Lakeland View**
Oil on board
7 x 10 ins



4. **View from Helvelyn, Lake District**
Oil on canvas
8 x 12 ins



5. Monet's House at Giverny
Oil on canvas
16 x 20 ins



6. *View Across Sheppey to the Thames*
Oil on board
36 x 48 ins



7. **After Rain at Oare Creek**
Oil on board
12 x 16 ins

8. **Boat Shed's at Oare Creek**
Oil on board
9 x 12 ins



9. The Luxembourg Gardens, Paris
Oil on board
18 x 24 ins



10. Autumn Colour on the Mall
Oil on canvas
26 x 36 ins



11. Low Tide Botany Bay
Oil on canvas
24 x 36 ins



12. **A Quiet Anchorage**
Oil on board
15 x 20 ins

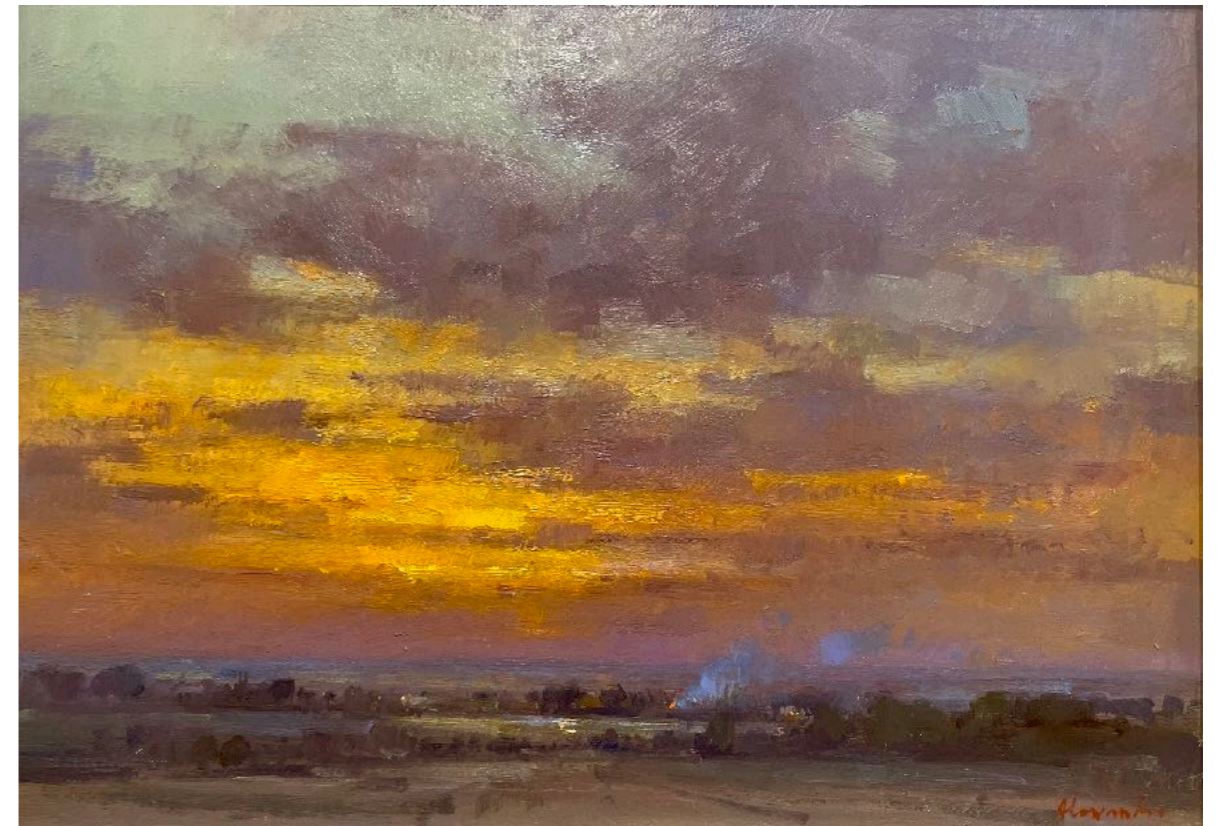


13. Sunday by the Sea
Oil on board
18 x 24 ins



14. **Snow over Minster Village**
Oil on board
12 x 16 ins

15. **Setting Sun over the Marshes**
Oil on board
10 x 14 ins

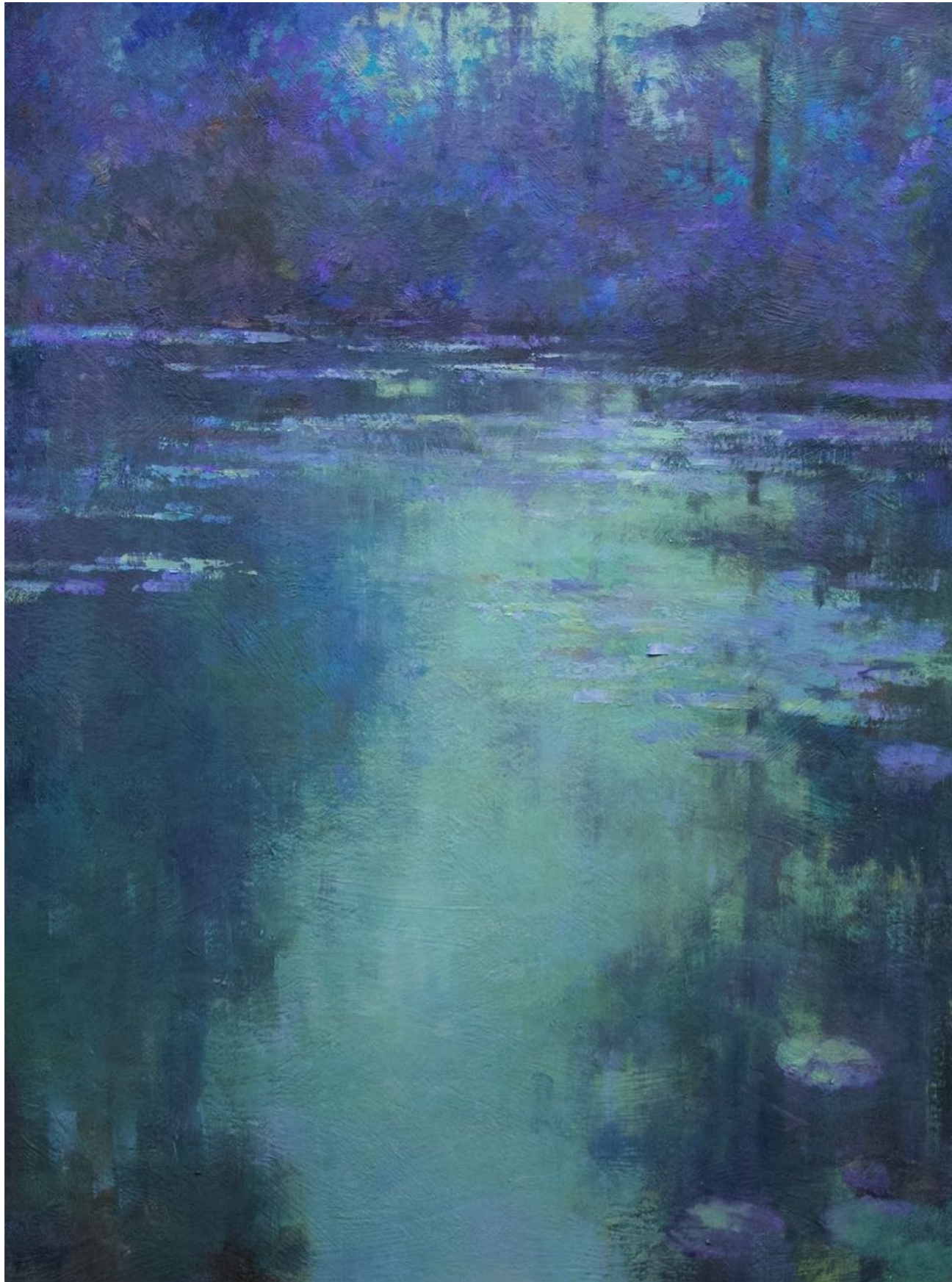




16. Fishing Boats at Hastings
Oil on board
12 x 16 ins



17. Thames Barges off Pin Mill
Oil on board
15 x 20 ins



18. *Dusk comes to Giverny*
Oil on board
18 x 24 ins



19. **Sunset by the Seine near Bougival**
Oil on canvas
24 x 30 ins



20. **Barges on the Seine**
Oil on board
15 x 20 ins



21. **Pont St Michel, Paris**
Oil on board
15 x 20 ins



22. Silver Light, Venice Lagoon
Oil on canvas
26 x 36 ins



23. **Sunset and Snow, St Nicholas-at-Wade**
Oil on board
10 x 20 ins



24. **Sunset on the Swale**
Oil on board
12 x 16 ins

25. Pegwell Bay, Thanet
Oil on board
12 x 16 ins



26. The Breakwater
Oil on board
16 x 24 ins



27. Winter Light at Stodmarsh
Oil on board
9 x 12 ins



28. Winter Light at Windsor

Oil on board

12 x 16 ins

29. Flooded Fields at Marshside

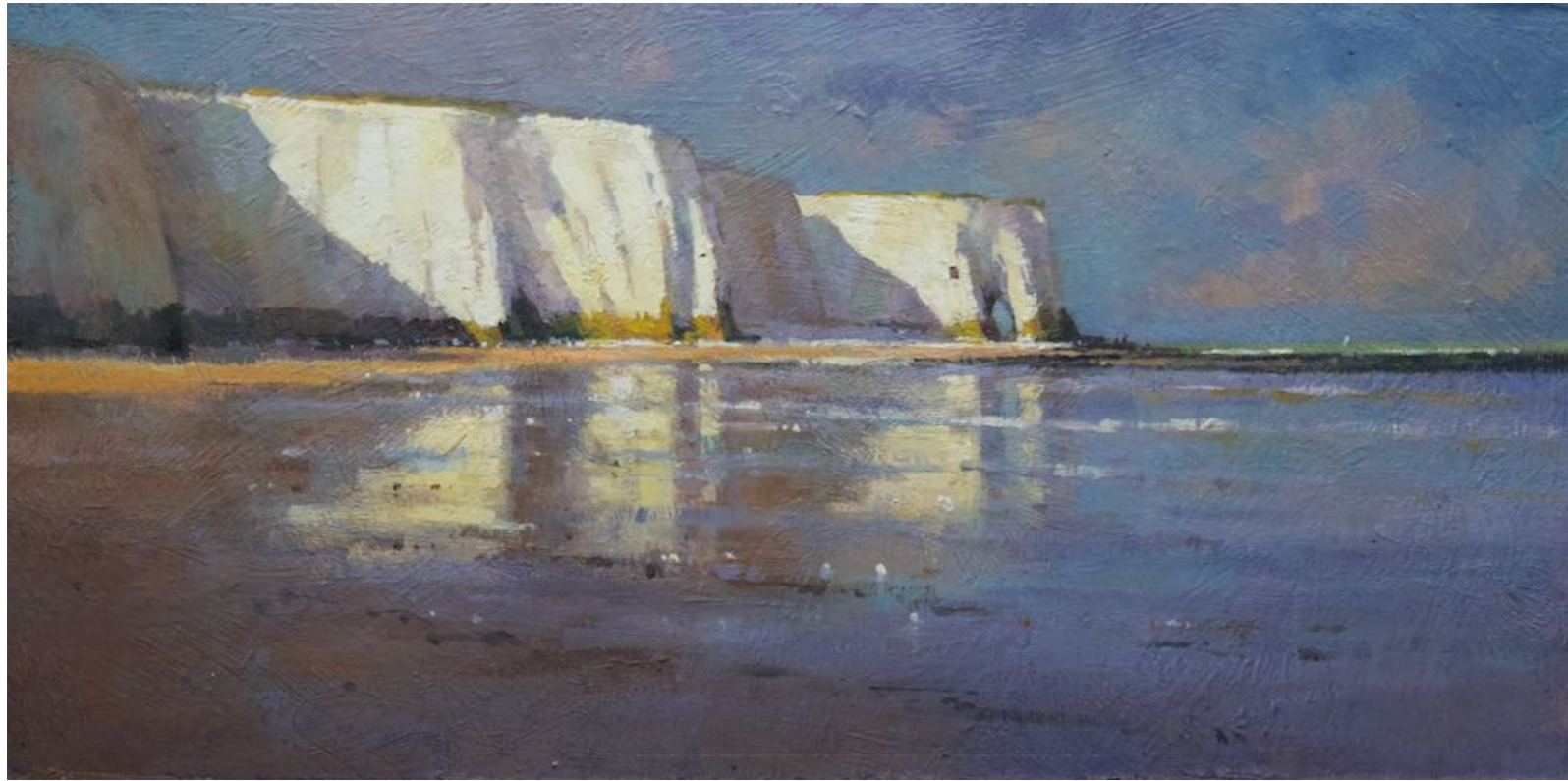
Oil on board

12 x 16 ins





30. Oast Houses near Goudhurst
Oil on board
20 x 30 ins



31. Low Tide at Kingsgate Bay
Oil on board
8 x 16 ins



32. Low Tide at Botany Bay
Oil on board
10 x 20 ins



33. Sunday Walk by the Sea
Oil on board
8 x 12 ins



34. Hanwell Locks
Oil on board
12 x 16 ins



35. **Snow at Miller's Lane**
Oil on board
12 x 16 ins



36. **After Rain Marshside**
Oil on board
8 x 16 ins



37. **Kentish Oasts**
Oil on board
9 x 12 ins



38. **Thameside Pasture**
Oil on board
12 x 16 ins



39. Sailing Boats at Walberwick
Oil on board
16 x 24 ins



40. Snow at St Nicholas
Oil on board
16 x 12 ins



41. **Wingham Village**
Oil on board
16 x 24 ins



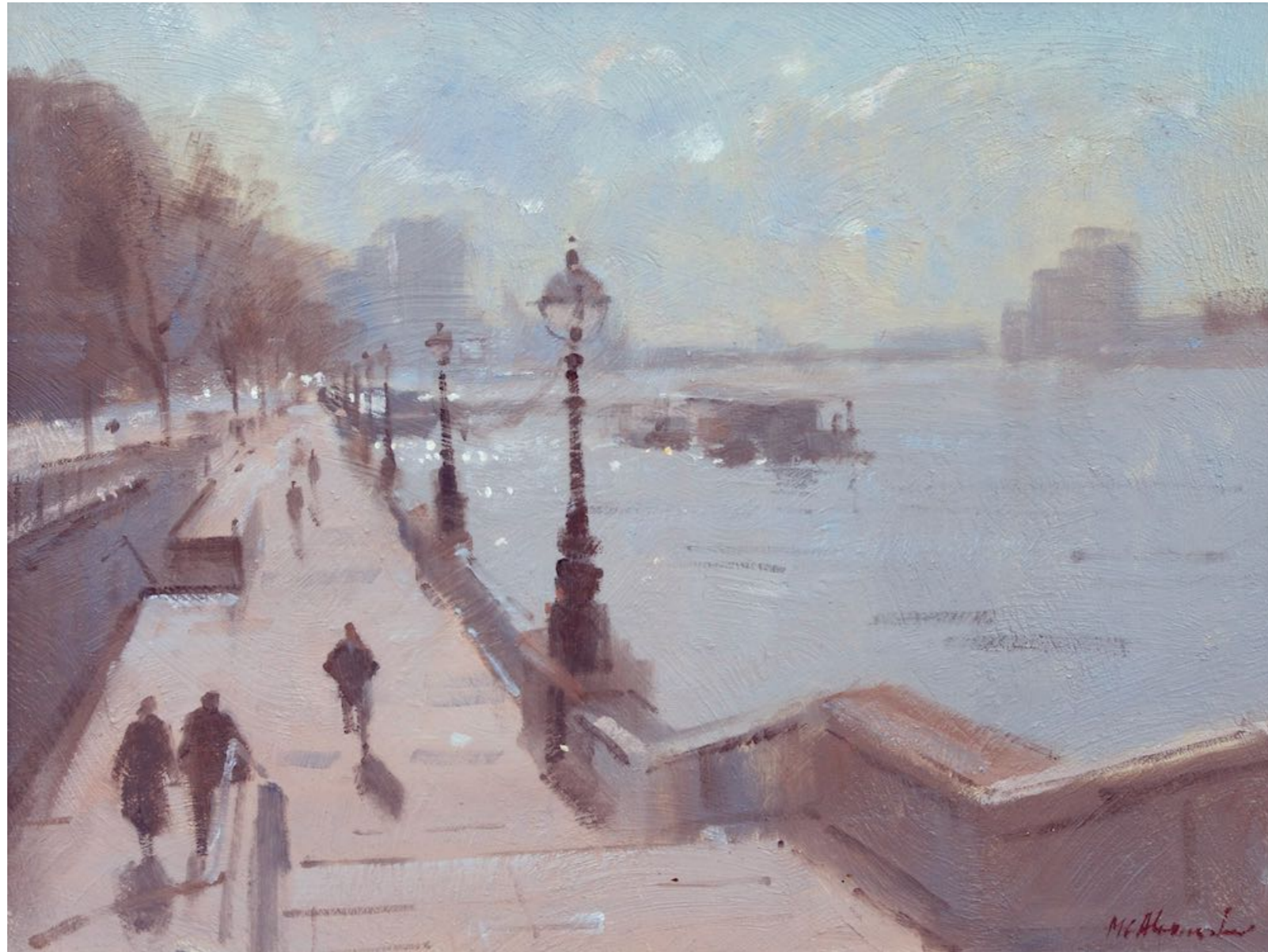
42. **The Marsh Gate**
Oil on canvas
16 x 20 ins



43. **Sunset on the Broads**
Oil on board
9 x 12 ins



44. View over Marsh Farm
Oil on board
16 x 24 ins



45. The Embankment, London
Oil on board
12 x 16 ins

Matthew Alexander

1953 – Born in Margate, Kent.

1970–1971 – Studied at Canterbury College of Art, Kent.

1971–1974 – Continued studies at Maidstone College of Art, Kent.

1974–1975 – Completed postgraduate studies at the University of London.

1975 – Made his debut in a joint exhibition with his father, Christopher Alexander, and brother, Gregory Alexander, at the Library Art Gallery, Margate.

1981 – Held his first solo exhibition at the Library Art Gallery, Margate, and exhibited at the Royal Academy Summer Exhibition, London.

1983 – Elected Associate Member of the Royal Society of British Artists (RBA), the Royal Institute of Oil Painters (ROI), and the Royal West of England Academy, Bristol.

1984 – Became a full member of the Royal Society of British Artists (RBA), London, and received the prestigious Hammerson Purchase Prize.

1988 – Exhibited with the Royal Society of British Artists, the New English Art Club, and the Royal Society of Watercolourists, all in London.

1990 – Participated in *People and Places*, a touring exhibition organized in collaboration with Kent County Libraries.

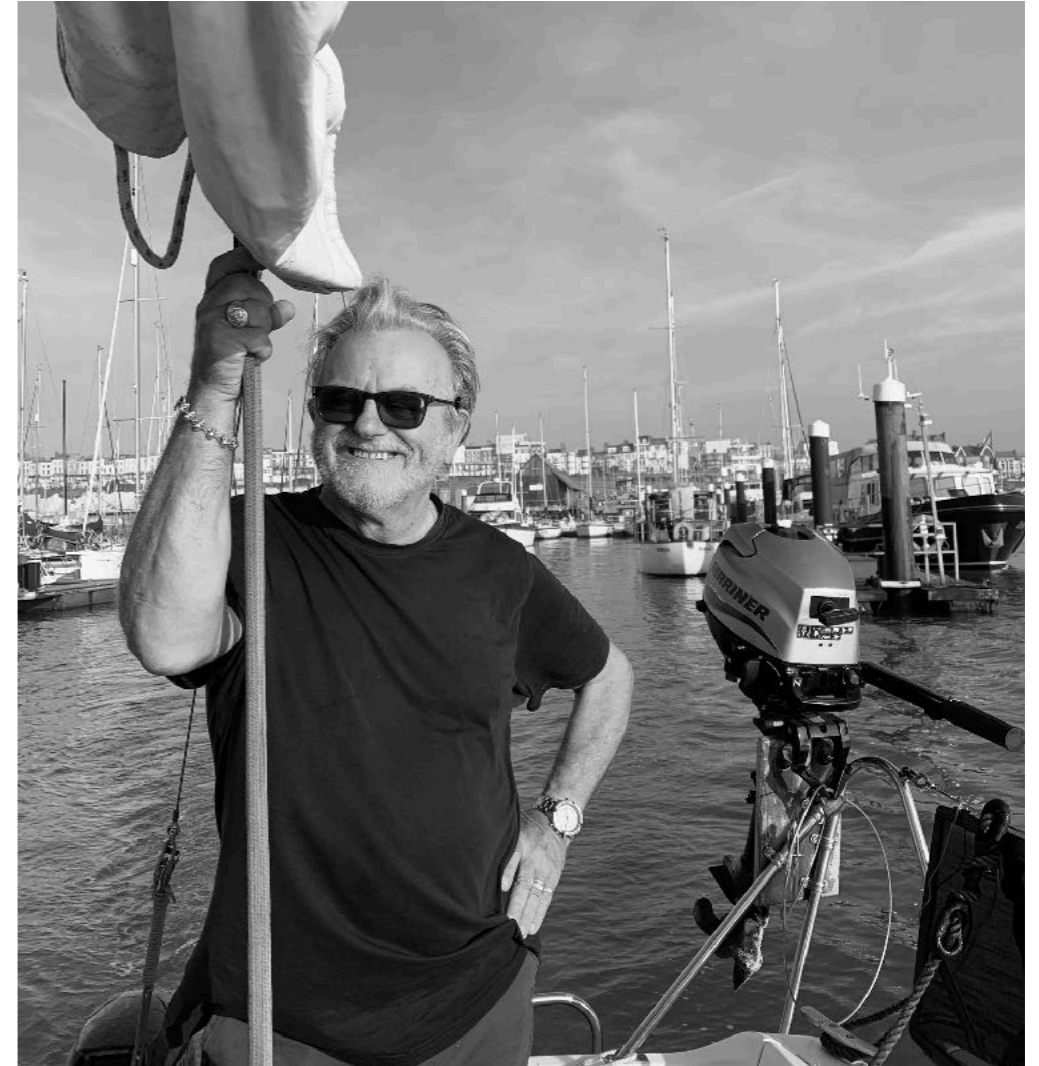
1991 – Traveled extensively across Europe for an exhibition in partnership with KPMG and the Catto Gallery.

1992 – Co-exhibited at Bankside Gallery, London, with the show traveling to Paris, The Hague, Dublin, and Brussels.

Exhibitions:

Matthew Alexander has an impressive exhibition history, showcasing his work in esteemed galleries both in the UK and internationally. Highlights include a 2024 solo exhibition at David Messums Fine Art in Bury Street, St James, and a series of annual exhibitions at David Messums Fine Art in Cork Street, London, from 1995 to 2005.

In addition, his work has been featured in prominent venues such as the Neville Gallery in Canterbury, Catto Gallery and Thompson's Gallery in London, the Bourne Gallery in Reigate, and the Walker Gallery in Harrogate. Internationally, his talent has been celebrated at the Cavalier Gallery in Greenwich, Connecticut, USA, and Alan Barnes Fine Art in Dallas, Texas, USA. Further exhibitions include the Brian Sinfield Gallery in Burford and the John Davies Gallery in Moreton-in-Marsh, reflecting his enduring appeal across diverse audiences and prestigious spaces.



MATTHEW ALEXANDER

Light and Shadow

6 ~ 31 December

Price List 2024

NO	TITLE	MEDIUM	INCHES H X W	PRICE	NO	TITLE	MEDIUM	INCHES H X W	PRICE
1	On the Bridge at Giverny	Oil on board	24 x 18	£6850	24	Sunset on the Swale	Oil on board	12 x 16	£2850
2	Autumn Colour near Patterdale	Oil on board	8 x 12	£1550	25	Pegwell Bay, Thanet	Oil on board	12 x 16	£2850
3	Lakeland View	Oil on board	7 x 10	£1350	26	The Breakwater	Oil on board	16 x 24	£6850
4	View from Helvelyn, Lake District	Oil on canvas	8 x 12	£1550	27	Winter Light at Stodmarsh	Oil on board	9 x 12	£1850
5	Monet's House at Giverny	Oil on canvas	16 x 20	£5850	28	Winter Light at Windsor	Oil on board	12 x 16	£2850
6	Across Sheppey to the Thames	Oil on board	36 x 48	£18,500	29	Flooded Fields at Marshside	Oil on board	12 x 16	£2850
7	After Rain at Oare Creek	Oil on board	12 x 16	£2850	30	Oast Houses near Goudhurst	Oil on board	20 x 30	£9850
8	Boat Shed's at Oare Creek	Oil on board	9 x 12	£1850	31	Low Tide at Kingsgate Bay	Oil on board	8 x 16	£2650
9	The Luxembourg Gardens, Paris	Oil on board	18 x 24	£6850	32	Low Tide at Botany Bay	Oil on board	10 x 20	£4250
10	Autumn Colour on the Mall	Oil on canvas	26 x 36	£13,500	33	Sunday Walk by the Sea	Oil on board	8 x 12	£1550
11	Low Tide, Botany Bay	Oil on canvas	24 x 36	£12,850	34	Hanwell Locks	Oil on board	12 x 16	£2850
12	A Quiet Anchorage	Oil on board	15 x 20	£5850	35	Snow at Miller's Lane	Oil on board	12 x 16	£2850
13	Sunday by the Sea	Oil on board	18 x 24	£6850	36	After Rain Marshside	Oil on board	8 x 16	£2650
14	Snow over Minster Village	Oil on board	12 x 16	£2850	37	Kentish Oasts	Oil on board	9 x 12	£1850
15	Setting Sun over the Marshes	Oil on board	10 x 14	£1950	38	Thameside Pasture	Oil on board	12 x 16	£2850
16	Fishing Boats Hastings	Oil on board	12 x 16	£2850	39	Sailboats at Walberwick	Oil on board	16 x 24	£6850
17	Thames Barges off Pin Mill	Oil on board	15 x 20	£5850	40	Snow at St Nicholas	Oil on board	16 x 12	£2850
18	Dusk come to Giverny	Oil on board	18 x 24	£6850	41	Wingham Village	Oil on board	16 x 24	£6850
19	Sunset by the Seine near Bougival	Oil on canvas	24 x 30	£10,500	42	The Marsh Gate	Oil on canvas	16 x 20	£5850
20	Barges on the Seine	Oil on board	15 x 20	£5850	43	Sunset on the Broads	Oil on board	9 x 12	£1850
21	Pont St Michel, Paris	Oil on board	15 x 20	£5850	44	View over Marsh Farm	Oil on board	16 x 20	£6850
22	Silver Light, Venice Lagoon	Oil on canvas	26 x 36	£13,500	45	The Embankment, London	Oil on board	12 x 16	£2850
23	Sunset and Snow, St Nicholas-at-Wade	Oil on board	10 x 20	£4250					



*Fishing Boats at Hastings
(Detail - no.17)*